



MONTHLY MEMBERSHIP PROGRESS REPORT

District 16 J

Results as of: 06/30/2019

GMT: MAHESH CHITNIS

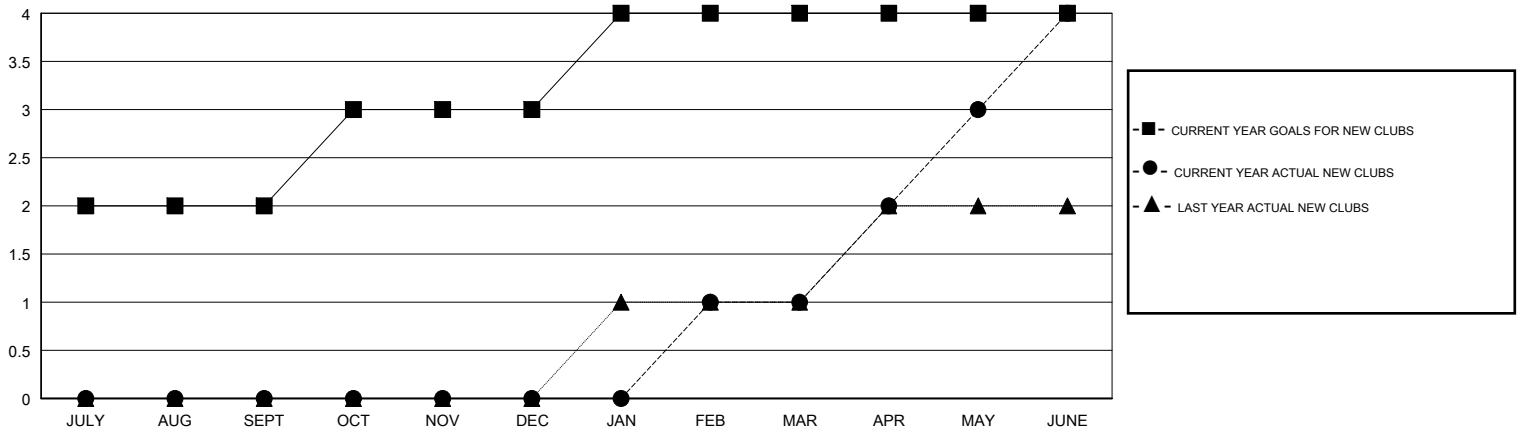
LOCATION NEW JERSEY

GMT CA

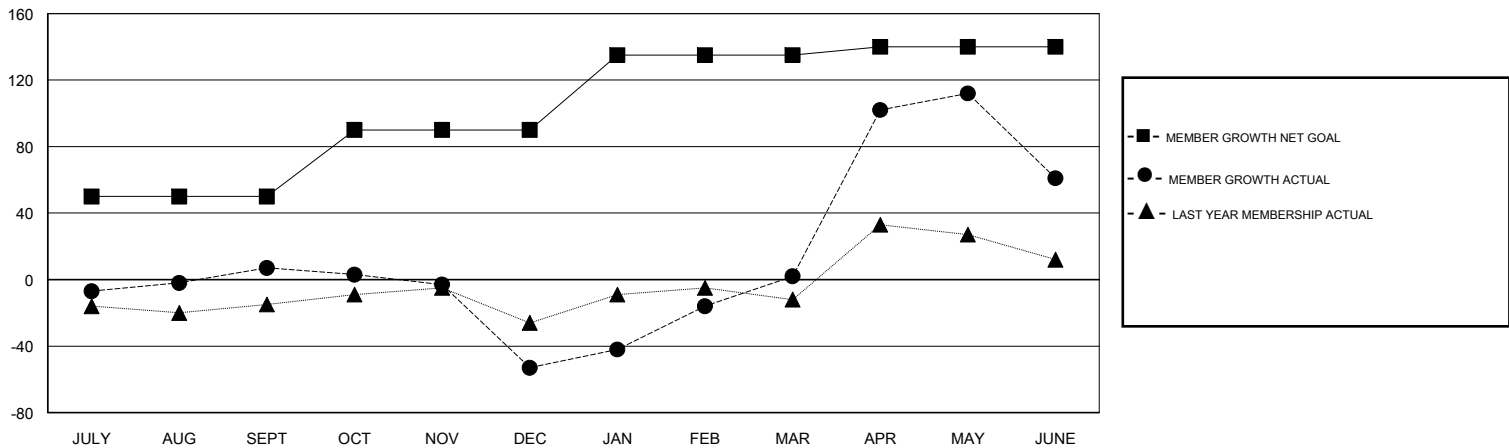
Clubs			
RESULTS FOR 2018-2019			
QUARTER	NEW CLUB GOAL	NEW CLUBS	DROPPED CLUBS
JULY/AUG/SEPT	2	0	1
OCT/NOV/DEC	1	0	2
JAN/FEB/MAR	1	1	0
APR/MAY/JUNE	0	3	2

Members			
RESULTS FOR 2018-2019			
QUARTER	MEMBER GROWTH NET GOAL	MEMBER GROWTH ACTUAL	DROPPED MEMBERS ACTUAL (including transfers)
JULY/AUG/SEPT	50	38	23
OCT/NOV/DEC	40	17	74
JAN/FEB/MAR	45	95	22
APR/MAY/JUNE	5	194	131

GOALS AND ACTUAL NEW CLUBS CUMULATIVE



GOALS AND ACTUAL MEMBERS CUMULATIVE



DROPPED CLUBS: 5

35 CLUBS OF 63 ADDED 1 OR MORE NEW MEMBERS

GENDER DISTRIBUTION

MALE 960 (62.87%)
 FEMALE 567 (37.13%)
 Women Percentage Fiscal Year Goal: 38%

DROPPED MEMBERS

[CLICK HERE FOR CUMULATIVE MEMBERSHIP DATA](#)

DECEASED	15
CLUB CANCELLED	44
OTHER	190
TOTAL	249

TOTAL FAMILY UNIT MEMBERS	347
FAMILY MEMBERS PAYING HALF DUES	182